

NOTES:

- A. MOUNTING SCREWS NOT SUPPLIED.
(SCREW LENGTH = PANEL THICKNESS + 5mm)
- B. PACKAGING: PULLS ARE PACKAGED IN A TRAY, LAYERED,
FOR INDIVIDUALLY PACKAGED, (1) PULL IN POLYETHYLENE BAG,
REMOVE THE -3 SUFFIX IN THE PART No.
- C. RECOMMENDED MAXIMUM TIGHTEN TORQUE: 170 N_m (15 lbf_{in})
- D. COSMETIC SPECIFICATION:
ALL SURFACES UNLESS OTHERWISE NOTED ARE TO CONFORM TO A CLASS "B"
DESIGNATION AS DESCRIBED IN SOUTHCO COSMETIC SPECIFICATION:
S-121-01 FOR CHROME PLATING
S-121-02 FOR ZINC PLATING
S-121-03 FOR POWDER COATING
S-121-05 FOR STAINLESS STEEL PARTS
S-121-06 FOR ANODIZED FINISH
- E. HANDLES ARE ROHS COMPLIANT.

southco

 PROPRIETARY ITEM - EXCEPT FOR USES EXPRESSLY
GRANTED IN WRITING, INFORMATION DISCLOSED
HEREON IS CONFIDENTIAL AND ALL RIGHTS PATENT
AND OTHERWISE ARE RESERVED BY SOUTHCO, INC.

P8 WIRE PULLS

DATE	DRAWN	CHKD	SCALE	DRAWING NUMBER
21AUG2004	DLH		.75:1	J-P8-1

REV	DATE	DRAWN/CHKD	DESCRIPTION
F	08MAY2007	DLH/MJS	PRN: P2007-0614
G	01OCT2007	GDW/JSS	PRN: P2007-1232
H	31JUL2008	ACH/MJS	PRN: P2008-0848
I	27APR2009	MJS/MJS	PRN: P2009-0541
J	06APR2011	MJS/TVA	PRN: P2011-0407
K	08MAY2012	CMS/BGL	PRN: P2012-0609
L	23OCT2012	CMS/MSR	PRN: P2012-1438

PART NUMBER:

P8- **AAA** - **BB** - **CC** **D** - **EE** - **3**

SEE NOTE B

MILLIMETERS

 ALL DIMENSIONS WITHOUT
TOLERANCES ARE FOR
REFERENCE ONLY.

 A3
PAPER
SIZE

AAA=PULL LENGTH
ROUND PROFILE

 LENGTH BETWEEN
MOUNTING HOLES
IN MILLIMETERS

OVAL PROFILE

128mm

BB=PULL HEIGHT
ROUND PROFILE

 HEIGHT OF PULL
IN MILLIMETERS

OVAL PROFILE

38mm

CC=THREAD TYPE
ROUND PROFILE

04 = 4-40 UNC-2B THREAD
06 = 6-32 UNC-2B THREAD
08 = 8-32 UNC-2B THREAD
10 = 10-32 UNF-2B THREAD
11 = 10-24 UNC-2B THREAD
M3 = M3 X 0.5-6H THREAD
M4 = M4 X 0.7-6H THREAD
M5 = M5 X 0.8-6H THREAD

OVAL PROFILE

10 = 10-32 UNF-2B THREAD

EE=MATERIAL/FINISH
ROUND PROFILE

11 = ALUMINUM/CLEAR ANODIZED
15 = ALUMINUM/BLACK ANODIZED
21 = STEEL/BRIGHT CHROME
23 = STEEL/ZINC PLATED
24 = STAINLESS STEEL/PASSIVATED
27 = ALUMINUM/ ALUCHROME

OVAL PROFILE

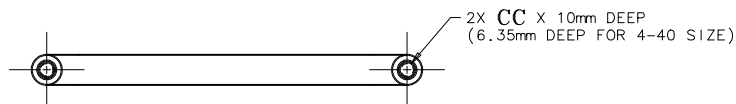
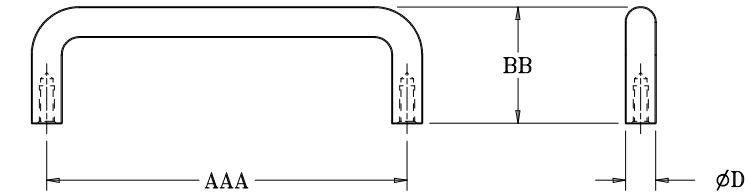
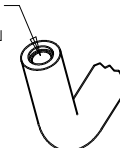
11 = ALUMINUM/CLEAR ANODIZED
15 = ALUMINUM/BLACK ANODIZED

D=PULL PROFILE
ROUND PROFILE = DIAMETER (øD)

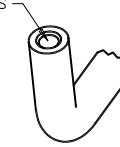
NOTHING = 8mm ROUND PROFILE
A = 6.35mm ROUND PROFILE
B = 10mm ROUND PROFILE

OVAL PROFILE = LENGTH X WIDTH (L X W)

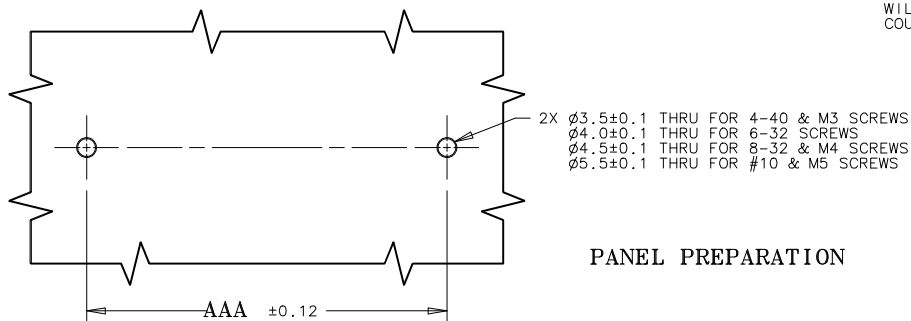
V = 15.8mm X 7.1mm OVAL PROFILE


 METRIC THREADS
WILL HAVE
COUNTERBORE - L


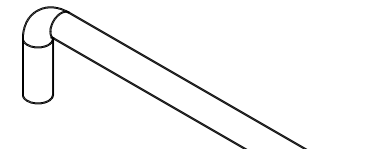
SCALE 1:1

 IMPERIAL THREADS
WILL HAVE
COUNTERSINK - V


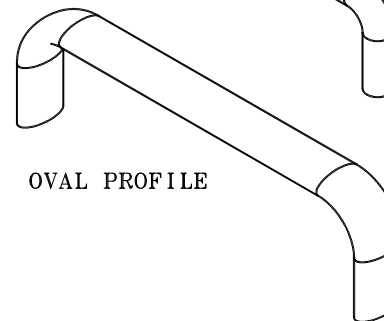
SCALE 1:1



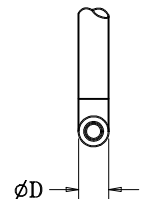
PANEL PREPARATION



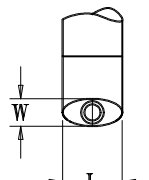
ROUND PROFILE



OVAL PROFILE



øD



W

L